

ADP-mPCIe-WLAN

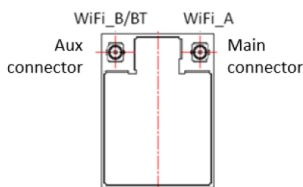
mPCIe module with WLAN/BT

Characteristics

- mPCIe module F1 or H1 with
- WLAN: IEEE 802.11 2X2 MU-MIMO ac/a/b/g/n
- BT: 5.0 LE
- Antenna sockets
- 3.3V Low Power Design
- -30°C - +85°C
- Linux support
- RED 2014/53/EU
- 47 CFR FCC Part 15, Subpart B, Class B
ICES-003 2016 Issue 6, Class B
ANSI C63.4.2014

Description

The ADP-mPCIe-WLAN can be used with mPCIe-Full-Mini Type F1 or mPCIe-Half-Mini Type H1. Main part on ADP-mPCIe-WLAN is the WLAN/BT module with Marvell chipset 88W8997. The PCIe signals are necessary for WLAN. The USB signals are necessary for Bluetooth. Frequency range is 2.4GHz and 5GHz. The antenna sockets are available to connect external antennas like Unictron H2B1PD1A1C385L or Taoglas FXP70.07.0053A. With the pre-certification, it is easy to use this module in many countries worldwide. Supported by Linux.



Module antenna configuration

Standard Versions/ Order Notations

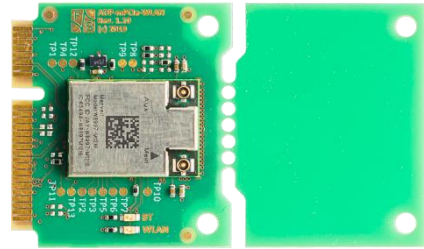
ADP-mPCIe-WLAN

F1 30mm x 50,95mm x 3mm

Minimum Order Quantity for Special Versions: 500 pieces

Technical Specification

Power Supply:	+3.3VDC/±5%
Power Consumption:	tbid.
Temperature Range:	-30°C - +85°C
Dimension:	F1 30mm x 50,95mm x 3mm (H1 30mm x 26,80mm x 3mm) (w x l x t)
Weight:	~ 10g



Connector Assignment

Pin #	Signal Name	Pin #	Signal Name
51	W_DISABLE2#	52	+3.3Vaux
49	Reserved	50	GND
47	Reserved	48	+1,5 V
45	Reserved	46	LED_WPAN#
43	GND	44	LED_WLAN#
41	+3.3Vaux	42	LED_WWAN#
39	+3.3Vaux	40	GND
37	GND	38	USB_D+
35	GND	36	USB_D-
33	PETp0	34	GND
31	PETn0	32	SMB_DATA
29	GND	30	SMB_CLK
27	GND	28	+1,5 V
25	PERp0	26	GND
23	PERn0	24	+3.3Vaux
21	GND	22	PERST#
19	Reserved (UIM_C4)	20	W_DISABLE1#
17	Reserved (UIM_C8)	18	GND
15	GND	16	UIM_VPP
13	REFCLK+	14	UIM_RESET
11	REFCLK-	12	UIM_CLK
9	GND	10	UIM_DATA
7	CLKREQ#	8	UIM_PWR
5	COEX2	6	1,5 V
3	COEX1	4	GND
1	WAKE#	2	3.3Vaux

Only the Pins in bold type are available!



